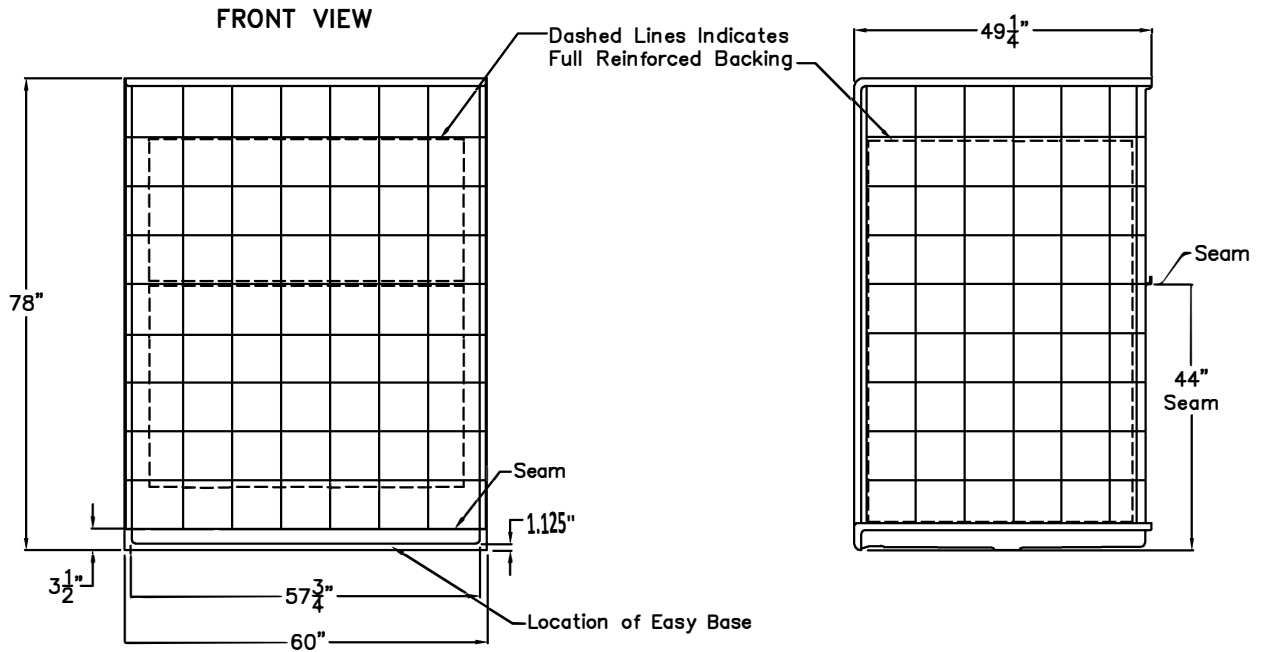
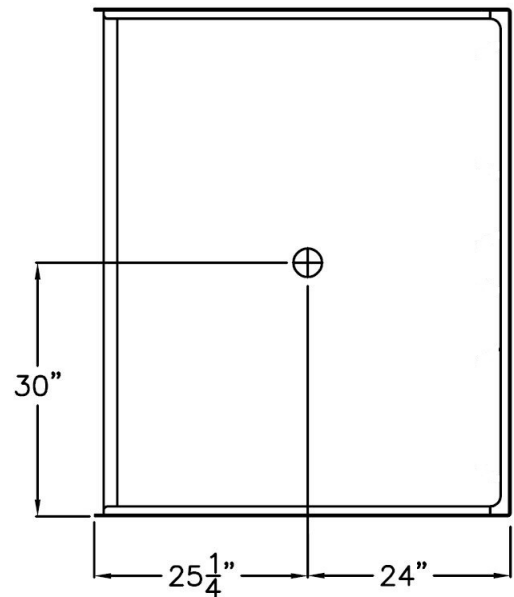


SUBMITTAL DATA



TOP VIEW



DUE TO THE NATURE OF THE MATERIALS
UNIT DIMENSIONS MAY VARY ± 1/2 INCH

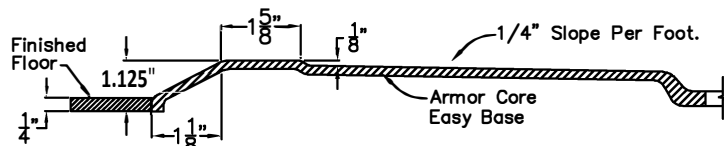
Sectional Shower

This shower enclosure shall be RBS model RBS 6036 BF 5P 1.125 Center drain location. Finished surface shall be of sanitary-grade applied acrylic. The unit shall have outside dimensions of 60" x 49 1/4" x 78". The unit shall meet ANSI Z124.1.2.

The enclosure shall be equipped with the following factory installed accessories:

- 1) Tile finish,
- 2) Five piece sectional design,
- 3) Full reinforced backing on all walls,
- 4) Armor Core Easy Base,
- 5) Left or right drain location,
- 6) 1.125" threshold.

Detail of 1.125" Threshold



Health at Home, Inc.

Drawing#: RBS 6048 BF 5P 1.125 C
No Shelf FWB Easy Base

Approved By Print Name:

Approved By Signature:

Date:

Date: 3-31-09

Revised: 2-6-20

Rep.:

Wholesaler:

Quote No.

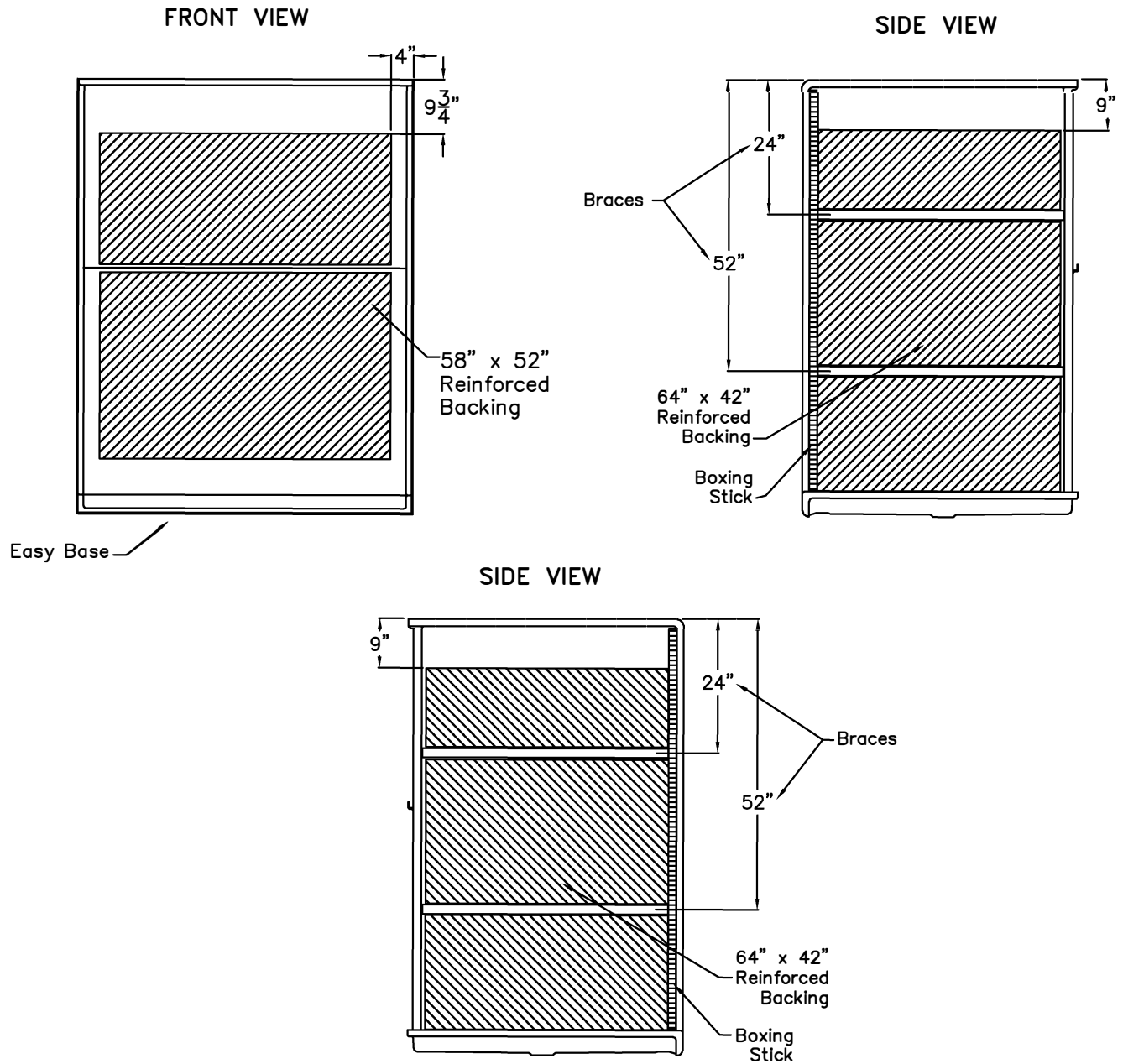
ORDER ENTRY BY FAX 888.802.8186 OR EMAIL orders@healthathomeinc.com

Office 704.960.0148 or 980.900.2845 www.healthathomeinc.com

Products that enhance safety, vitality, & longevity at home.

Backing Placement Drawing

SUBMITTAL DATA



DUE TO THE NATURE OF THE MATERIALS
UNIT DIMENSIONS MAY VARY ± 1/2 INCH

Job Name:		Health at Home, Inc.	
Approved by Print Name:		Drawing#: RBS 6048 BF 5P 1.125 C No Shelf FWB Easy Base-BP	
Approved by Signature:	Date:	Date: 3-31-09	Revised: 2-6-20
Rep.:	Wholesaler:	Quote No.:	

ORDER ENTRY BY FAX 888.802.8186 OR EMAIL orders@healthathomeinc.com

Office 704.960.0148 or 980.900.2845 www.healthathomeinc.com

Products that enhance safety, vitality, & longevity at home.