

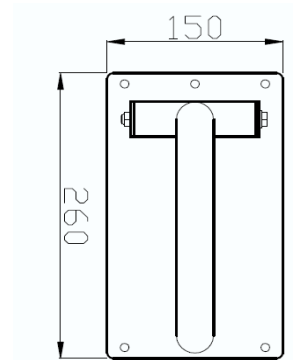


health at home, inc.
Enhancing Safety, Vitality & Longevity at Home

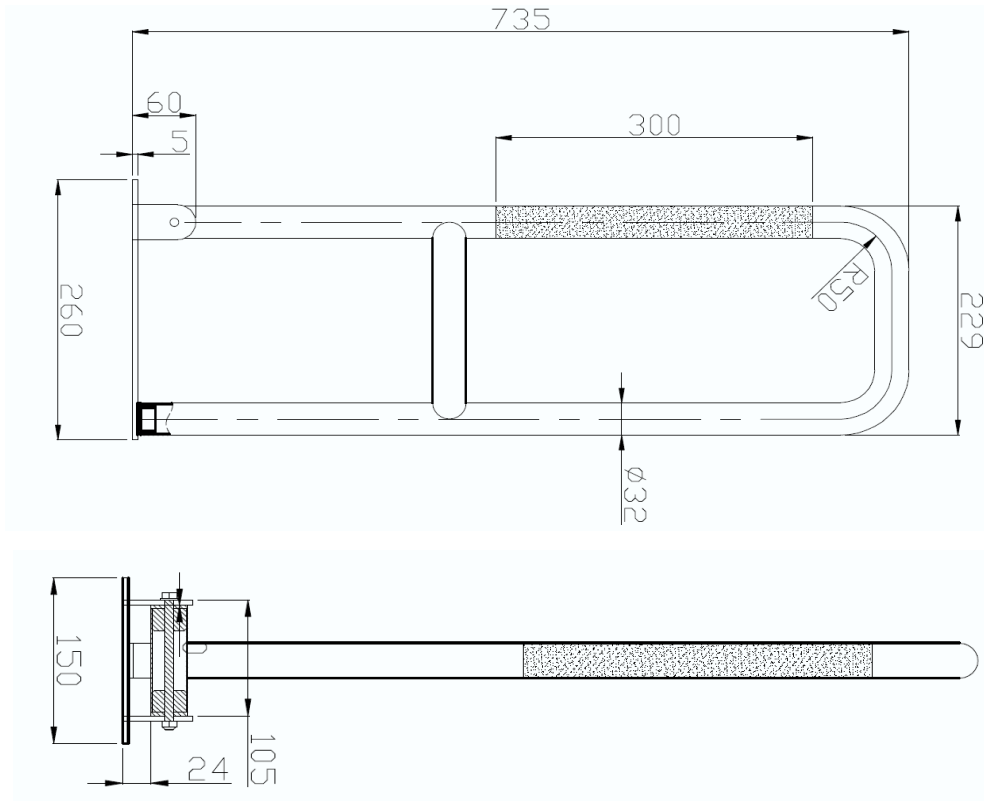
Swing Up / Flip Down Grab Bar

Meets ADA requirements. Stainless steel quality provides outstanding sanitary and damage-resistant properties often used in public institutional, and residential applications.

- Material: 304 stainless steel
- Available Finishes: Satin (SA)
Polished Chrome (PO)
Oil Rub Bronze (OB)
Satin Peened (PN)
Powder White (PW)
Matte Black (MB)
- Dimensions:
Tube outside diameter: 1.25"
Length: 29"
- Heavy duty mounting plate with five attachment points
- Swing up position for when not in use
- ADA Compliant



Measurements in MM



ORDER ENTRY BY FAX 888.802.8186 OR EMAIL orders@healthathomeinc.com

Office 704.960.0148 or 980.900.2845 www.healthathomeinc.com

Products that enhance safety, vitality, & longevity at home.