

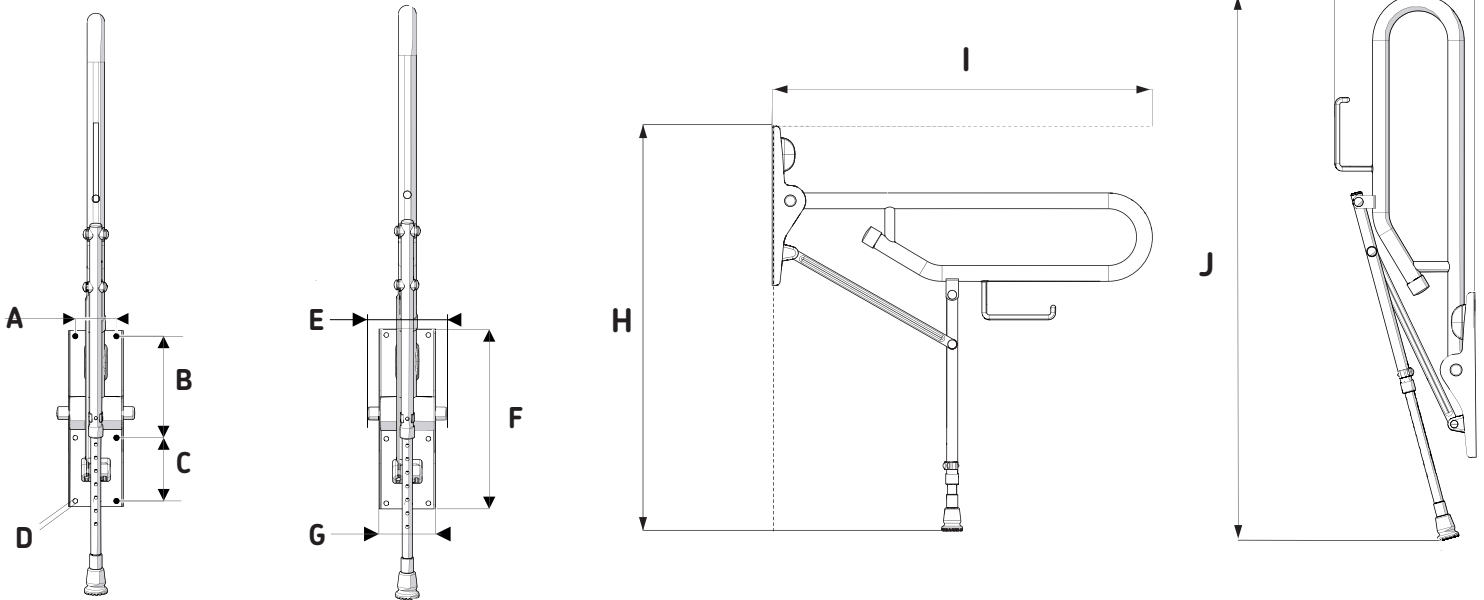


health at home, inc.
Enhancing Safety, Vitality & Longevity at Home

Bilanx bathing collection®

strike the balance Design Safety

HH-01830-BS/WH



Fixing Plate Dimensions

Support Rail Dimensions

A	B	C	D	E	F	G	H	I	J	K
3"	7 ³ / ₈ "	4 ¹ / ₂ "	3/8" diam	5 ¹ / ₂ "	12 ¹ / ₂ "	4"	26 ³ / ₄ "-34 ³ / ₄ "	30 ¹ / ₈ "	41 ³ / ₄ "	11 ¹ / ₂ "
75mm	185mm	115mm	8.5mm diam	142mm	320mm	100mm	680-880mm	765mm	1060mm	290mm

Technical Specifications

Composition:
Shipped Weight: 10lbs
Handing: Non -handed
Weight capacity: 220kg/ 440lbs when properly fastened to blocking/concrete
Color: Polished Stainless Steel
Warranties: 10 years for residential use or 5 years for commercial use

Features

- Folds neatly back to wall when not in use
- Supporting leg for additional strength and stability
- Leg adjusts in 25mm ³/₄" increments
- + / - 1/2" fine adjustment to foot of support leg
- Includes toilet roll holder for convenience

ORDER ENTRY BY FAX 888.802.8186 OR EMAIL orders@healthathomeinc.com
Office 704.960.0148 or 980.900.2845 www.healthathomeinc.com
Products that enhance safety, vitality, & longevity at home.